

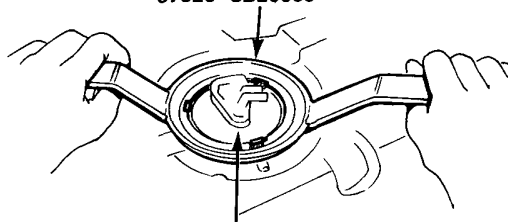
# Fuel Gauge Sending Unit

## Testing

**WARNING** Do not smoke while working on fuel system. Keep open flame away from work area. Drain fuel only into an approved container.

1. Check that ignition switch is OFF, then disconnect fuel sending unit connector at tank.
2. Drain and remove fuel tank as shown on page 12-7.
3. Remove fuel sending unit from tank.

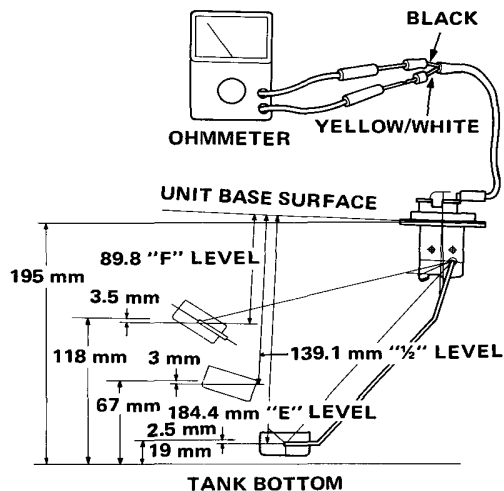
FUEL SENDER WRENCH  
07920-SB20000



FUEL SENDING UNIT

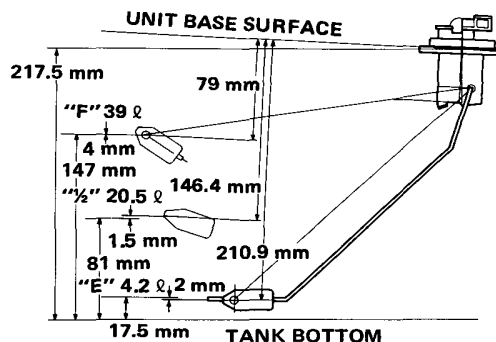
4. Measure resistance between the yellow/white wire and black wire at the 3 float positions shown below.

### Coupe

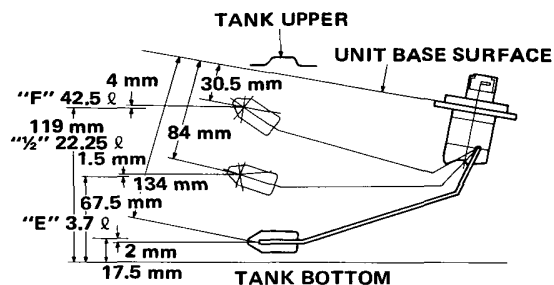


| FLOAT POSITION | RESISTANCE (OHMS) | FUEL VOLUME (ℓ) |
|----------------|-------------------|-----------------|
| EMPTY          | 105-110           | 5               |
| ½ FULL         | 25.5-39.5         | 20.5            |
| FULL           | 2-5               | 39              |

### Coupe (Canadian model)



### 2D H/B



### 4D

